

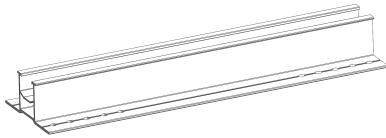
Installation Manual

SOLAR PANEL BRACKET ALUMINIUM PROFILE MOUNTING RAIL-10PACK

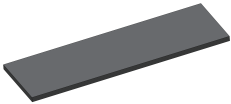
IDEAL FOR TIN ROOF, FLAT ROOF, SHEET ROOF

Components List/Dimension:

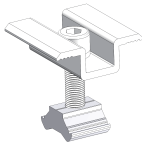
Rail T-Shaped Centre Clamp



Rubber Pad



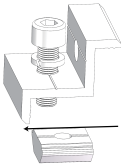
Middle Clamp



End Clamp



OR

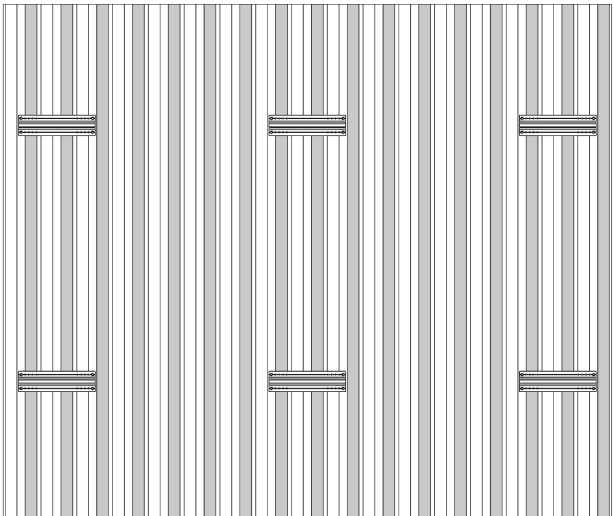


Screw



1

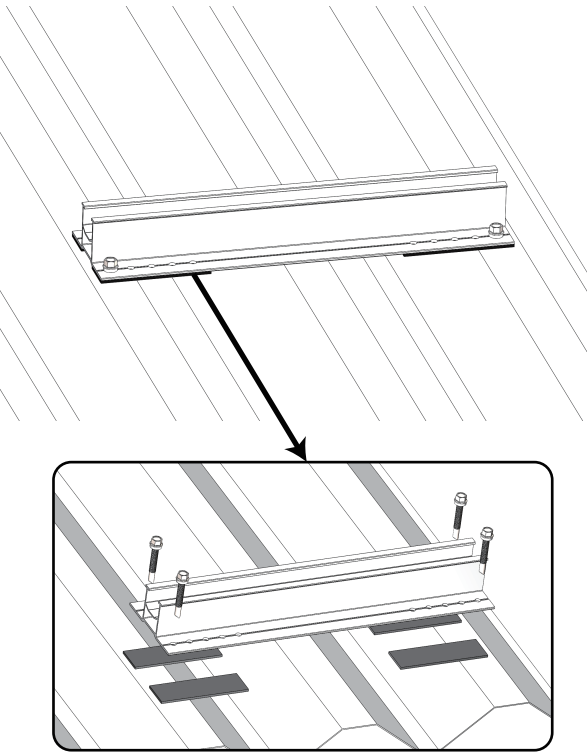
Installation procedure



Step 1. Determine the position of the mounting rails on the roof according to the solar panels.

2

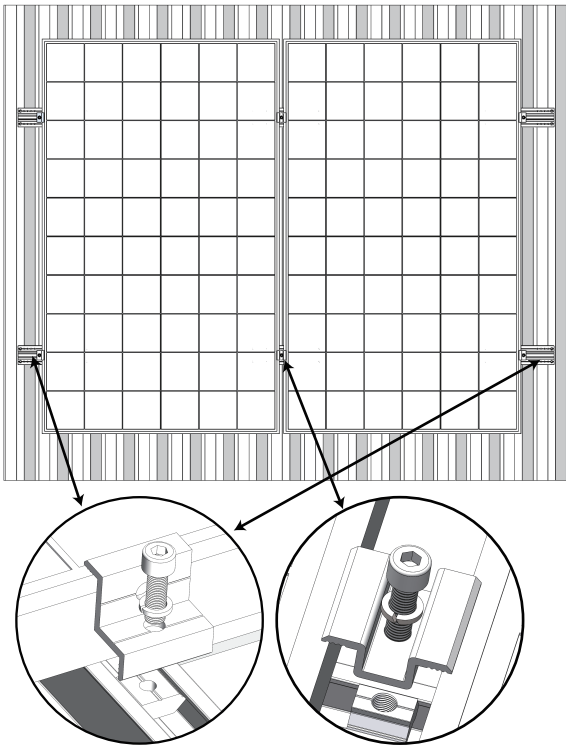
Installation procedure



Step 2. Bond the rubber pads to the solar mounting rails, and then mount the rails to the roof with Screws.

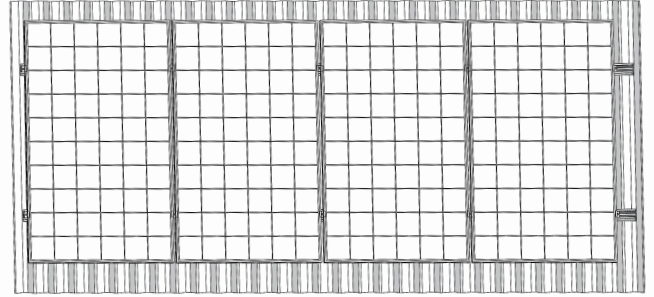
3

Installation procedure



Step 3. Install the first solar panel and fasten it with the end clamps, and then insert the second solar panel and fasten it with the middle clamps and the end clamps.

Installation procedure



Step 4. If the solar system is large, repeat the above process, the same installation method is suitable for 4 pcs panels, 6 pcs panels and more solar panels.